

VERTICAL MULTI-STAGE DEEP WELL JET PUMPS

MVPH SERIES



The MVPH Series Vertical Jet Pumps are the industry standard deep well jet pumps for over-the-well bolt-on installations. They include the pre-plumbed external automatic regulator, pressure gauge, pressure switch, and a complete line of casing adapters for 4" double pipe, 2" or 3" single pipe jet packages.

APPLICATIONS

Supply water systems and sprinkling systems for homes, farms, and cottages.

SPECIFICATIONS

- ◆ **Body:** Rugged cast iron.
- ◆ **Pump and Motor Shaft:** 416 stainless steel.
- ◆ **Impellers:** Noryl®.
- ◆ **Diffuser:** Close-grained cast iron.

FEATURES

- ◆ **Automatic Pressure Regulator:** Faster acting, quieter design eliminates hunting for correct drive pressure. Stem and guide are precisely molded to assure efficient, trouble free performance on all deep wells.
- ◆ **Quality Construction:** Precision machined, close grained cast iron pump body and base are specially treated to resist corrosion.
- ◆ **Noryl® Impellers:** Precision molded for perfect balance and ultra smooth for highest performance and efficiency.
- ◆ **Pressure Switch:** High quality. Differential and cut-in/cut-out pressure settings are adjustable.
- ◆ **Motor Windings:** Superior insulation materials protect against excessive moisture and contaminants to ensure prolonged motor life.
- ◆ **Mechanical Shaft Seal:** Precision lapped and highly polished carbon ceramic, stainless steel construction. Internal design guarantees continuous water lubrication for maximum protection.
- ◆ **Dust Proof Cover:** All electrical components are protected from dirt, dust and insects by a dust proof canopy. Ventilating air cannot contaminate vital switching components. This eliminates the most common cause of motor failure.
- ◆ **Balanced Rotor:** The rotor is die cast under high pressures for uniform performance and greater efficiency, and also dynamically balanced.
- ◆ **Heavy-Duty Ball Bearings:** Permanently lubricated sealed bearings are extensively tested to ensure extended life and smooth, quiet operation.
- ◆ **Pump and Motor Shaft:** One-piece threaded shaft for positive impeller drive and alignment. Shaft is stainless steel for maximum corrosion resistance.

VERTICAL MULTI-STAGE DEEP WELL JET PUMPS MVPH SERIES

ORDERING INFORMATION

PUMPS

CATALOG NUMBER	HP	DESCRIPTION	MAX. PRESS. REG. SETTING	PIPE TAPPING SIZES			MOTOR VOLTAGE	APPROX. WT. (LBS.)
				SUCTION	DRIVE	DISCHARGE		
MVPH-100	1	Base Mounted Pump	60 PSI	1-1/4"	1-1/4"	1"	115/230	73
MVPH-150	1-1/2	Base Mounted Pump	85 PSI	1-1/4"	1-1/4"	1"	230	120
MVPH-200	2	Base Mounted Pump	95 PSI	1-1/4"	1-1/4"	1"	230	125

ADAPTER FLANGE

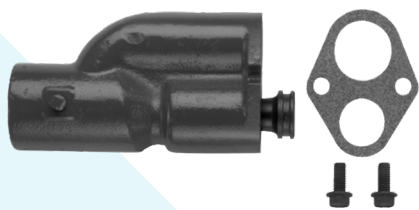
CATALOG NUMBER	DESCRIPTION	USED WITH
J216-27	1-1/4" x 1-1/4"	4" double pipe; 1, 1-1/2 and 2 HP

Order pump from ordering information table above. A Jet Package (see table below) should be ordered with every Series MVPH Pump. All installations require an appropriate size adapter flange or casing adapter if bolt-on feature is desired.

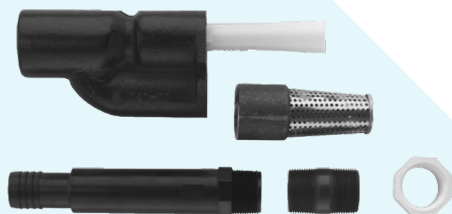
JET PACKAGES (A jet package should be ordered with every convertible or deep well jet pump.)

PACKAGE NUMBER	DESCRIPTION
PKG 1-23SD	For shallow well and deep well applications and for all 4" double pipe applications
PKG 2A-23SD	For shallow well applications and for all 4" double pipe applications with three venturis
PKG 1-12AP* and PKG 1-12APB*	Jet with built-in check valve; for all 2" single pipe deep well applications
PKG 1-18AP* and PKG 1-8APB*	Jet with built-in check valve; for all 2" single pipe deep well applications
PKG 1-23CP*, PKG 1-22CP*, PKG 1-17CP*, PKG 1-16CP*	Jet with built-in check valve; for all 3" single pipe deep well applications

*Suction Tapping: 1-1/4" Male and 1" Female



Pkg 1- 23SD Shallow Well and Deep Well



Pkg 2A- 23SD - Double Pipe



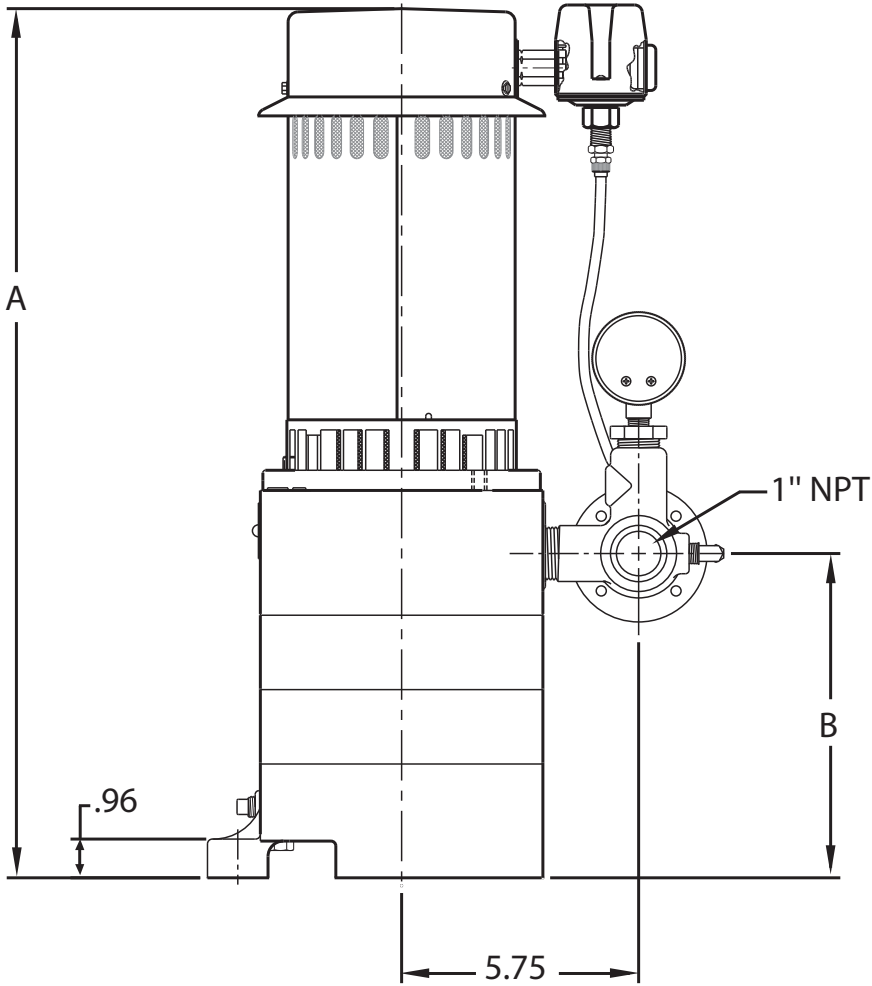
Pkg 2A - Accessory Package



**Pkg 1- □□ AP
2" Single Pipe Cast Iron
or
Pkg 1- □□ APB
2" Single Pipe Brass
or
Pkg 1- □□ CP
3" Single Pipe**

VERTICAL MULTI-STAGE DEEP WELL JET PUMPS MVPH SERIES

OUTLINE DIMENSIONS



CAT. NO.	A	B
MVPH-100	18-3/8	5-5/8
MVPH-150	20-7/16	7-1/2
MVPH-200	20-15/16	7-1/2

Dimensions (in inches) are for estimating purposes only.

VERTICAL MULTI-STAGE DEEP WELL JET PUMPS MVPH SERIES

PUMP PERFORMANCE

CAPACITY IN GALLONS PER MINUTE

CAT. NO.	HP	JET NO.	USES VENTURI	USES NOZZLE	PUMPING DEPTH IN FEET										MAX. PUMP SHUT OFF PRESS. (PSI)	
					30'	40'	50'	60'	70'	80'	90'	100'	110'	120'	JET AT MIN. DEPTH	JET AT MAX. DEPTH
4" DOUBLE PIPE - 40 PSI																
MVPH-100	1	23SD	J32P-24	J34P-42	12.1	11.7	11.6	11.1	10.2	9.2	7.8	6.4	5.0	4.0	120	76
		15SD	J32P-18	J34P-42	5.5	5.5	5.5	5.4	5.3	5.3	5.2	5.1	5.1	5.0	200	97
MVPH-150	1-1/2	23SD	J32P-24	J34P-42	12.2	12.2	12.2	12.2	11.7	11.3	10.7	9.9	9.0	8.3	164	95
		15SD	J32P-18	J34P-42	5.5	5.5	5.5	5.5	5.5	5.5	5.3	5.3	5.2	5.1	314	172
MVPH-200	2	23SD	J32P-24	J34P-42	12.2	12.2	12.2	12.2	11.8	11.3	11.2	11.1	11.0	10.0	195	110
		23SD	J32P-18	J34P-42	5.5	5.5	5.5	5.5	5.5	5.5	5.3	5.3	5.2	5.1	314	172
2" SINGLE PIPE - 40 PSI																
MVPH-100	1	12AP	J32P-24	J34P-42	12.1	11.3	11.2	10.0	8.8	7.6	6.5	5.6	3.3	1.8	118	80
		8AP	J32P-18	J34P-42	5.5	5.5	6.3	5.3	5.2	5.1	5.0	5.0	5.0	5.0	198	126
MVPH-150	1-1/2	12AP	J32P-24	J34P-42	12.2	12.0	12.0	12.0	11.5	11.2	9.7	8.3	6.8	5.5	162	110
		8AP	J32P-18	J34P-42	5.5	5.5	5.5	5.5	5.5	5.3	5.2	5.1	5.0	5.0	266	158
MVPH-200	2	12AP	J32P-24	J34P-42	12.2	12.0	12.0	12.0	11.7	11.2	11.0	10.3	8.3	7.5	193	139
		8AP	J32P-18	J34P-42	5.5	5.5	5.5	5.5	5.5	5.3	5.2	5.2	5.1	5.1	312	192
3" SINGLE PIPE - 40 PSI																
MVPH-100	1	23CP	J32P-24	J34P-42	12.1	11.7	11.6	11.1	10.2	9.2	7.8	6.4	5.0	4.0	120	76
		16CP	J32P-18	J34P-42	5.5	5.5	5.5	5.4	5.3	5.3	5.2	5.1	5.1	5.0	200	97
MVPH-150	1-1/2	23CP	J32P-24	J34P-42	12.2	12.2	12.2	12.2	11.7	11.3	10.7	9.9	9.0	8.3	164	95
		22CP	J32P-20	J34P-42	7.7	7.7	7.7	7.5	7.5	7.4	7.3	7.3	7.2	7.2	210	110
		16CP	J32P-18	J34P-42	5.5	5.5	5.5	5.5	5.5	5.5	5.3	5.2	5.2	5.1	2668	132
MVPH-200	2	23CP	J32P-24	J34P-42	12.2	12.2	12.2	12.2	11.8	11.3	11.2	11.1	11.0	10.0	1195	110
		22CP	J32P-20	J34P-42	7.7	7.7	7.7	7.5	7.5	7.4	7.3	7.3	7.2	7.2	250	128
		16CP	J32P-18	J34P-42	5.5	5.5	5.5	5.5	5.5	5.5	5.3	5.3	5.2	5.1	314	172

Tested and rated in accordance with Water Systems Council Standards.

NOTE: Pumps installed with a Pro-Source® tank require a 100 psi relief valve. Pumps installed with a conventional tank require a 75 psi relief valve. Relief valve must be capable of relieving entire flow of pump at relief pressure.

VERTICAL MULTI-STAGE DEEP WELL JET PUMPS MVPH SERIES

PUMP PERFORMANCE

CAPACITY IN GALLONS PER MINUTE

CAT. NO.	HP	JET NO.	USES VENTURI	USES NOZZLE	PUMPING DEPTH IN FEET										MAX. PUMP SHUT OFF PRESS. (PSI)	
					130'	140'	180'	200'	220'	240'	260'	280'	300'	320'	JET AT MIN. DEPTH	JET AT MAX. DEPTH
4" DOUBLE PIPE - 40 PSI																
MVPH-100	1	23SD	J32P-24	J34P-42	3.0										120	76
		15SD	J32P-18	J34P-42	4.8	4.5	3.3	2.7	2.0	1.3	1.0				200	97
MVPH-150	1-1/2	23SD	J32P-24	J34P-42	7.0	4.0	1.3								164	95
		15SD	J32P-18	J34P-42	5.1	5.0	4.8	4.7	4.5	4.3	4.0	3.3	2.7		314	172
MVPH-200	2	23SD	J32P-24	J34P-42	8.7	7.0	4.0	2.0							195	110
		23SD	J32P-18	J34P-42	5.1	5.0	5.0	4.8	4.8	4.5	4.3	4.0	3.3	2.7	314	172
2" SINGLE PIPE - 40 PSI																
MVPH-100	1	12AP	J32P-24	J34P-42											118	80
		8AP	J32P-18	J34P-42	4.5	4.2	2.0								198	126
MVPH-150	1-1/2	12AP	J32P-24	J34P-42	4.2	3.3									162	110
		8AP	J32P-18	J34P-42	5.0	4.8	4.3	3.5	2.7	1.7					266	158
MVPH-200	2	12AP	J32P-24	J34P-42	6.3	5.3									193	139
		8AP	J32P-18	J34P-42	5.0	4.8	4.7	4.3	3.7	3.2	2.5				312	192
3" SINGLE PIPE - 40 PSI																
MVPH-100	1	23CP	J32P-24	J34P-42	3.0										120	76
		16CP	J32P-18	J34P-42	4.8	4.5	3.3	2.7	2.0	1.3	1.0				200	97
MVPH-150	1-1/2	23CP	J32P-24	J34P-42	7.0	4.0	1.3								164	95
		22CP	J32P-20	J34P-42	7.0	7.0	4.3	4.0	3.2	2.2					210	110
		16CP	J32P-18	J34P-42	5.0	5.0	4.9	4.7	4.0	3.8	3.0	2.3	1.7		2668	132
MVPH-200	2	23CP	J32P-24	J34P-42	8.7	7.0	4.0	2.0							1195	110
		22CP	J32P-20	J34P-42	7.0	7.0	5.3	5.0	4.7	4.0	3.0	2.2			250	128
		16CP	J32P-18	J34P-42	5.1	5.0	5.0	4.8	4.7	4.5	4.3	4.0	3.3	2.7	314	172

Tested and rated in accordance with Water Systems Council Standards.

NOTE: Pumps installed with a Pro-Source® tank require a 100 psi relief valve. Pumps installed with a conventional tank require a 75 psi relief valve. Relief valve must be capable of relieving entire flow of pump at relief pressure.



293 Wright Street
Delavan, WI 53115
Ph: 866.973.6835
Fx: 800.426.9446

490 Pinebush Rd., Unit 4
Cambridge, Ontario
Canada N1T 0A5
Ph: 800.363.7867
Fx: 888.606.5484

pentair.com

All indicated Pentair trademarks and logos are property of Pentair. Third party registered and unregistered trademarks and logos are the property of their respective owners. Because we are continuously improving our products and services, Pentair reserves the right to change specifications without prior notice.

Noryl® is a registered trademark of SABIC Global Technologies B.V.

©2022 Pentair. All Rights Reserved.

M9105WS(12-15-22)